

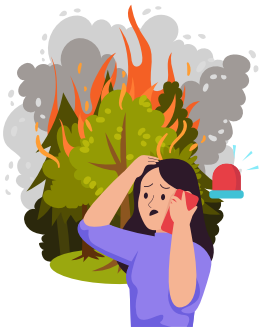


FEEL SAFE



OPERATION WILDFIRE

911? EMERGENCY, THERE'S A WILDFIRE!



1

UNDERSTAND YOUR LOCATION



2

CALL THE EMERGENCY SERVICE NUMBER*

3

INFORMATION TO STATE TO THE EMERGENCY SERVICE



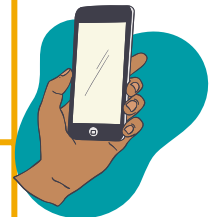
LOCATION: Describe your surroundings, trails, and landmarks. If you have a map with you, state where you are.



GPS COORDINATES: Learn in advance how to share GPS coordinates on your smartphone. This will help the emergency services finding you faster.



BATTERY STATUS: Check and mention the battery level of your smartphone. It's important to let them know for how long your phone can stay on.



CELLPHONE TYPE: Provide details about your cellphone model and share your cellphone number. Provide also other people's phone number if you are not alone, so the emergency service can reach them if you are not available.

4

STAY CALM AND SPEAK CLEARLY!

*REMEMBER: if you're travelling in Europe, the Emergency Service Number is always **112**.